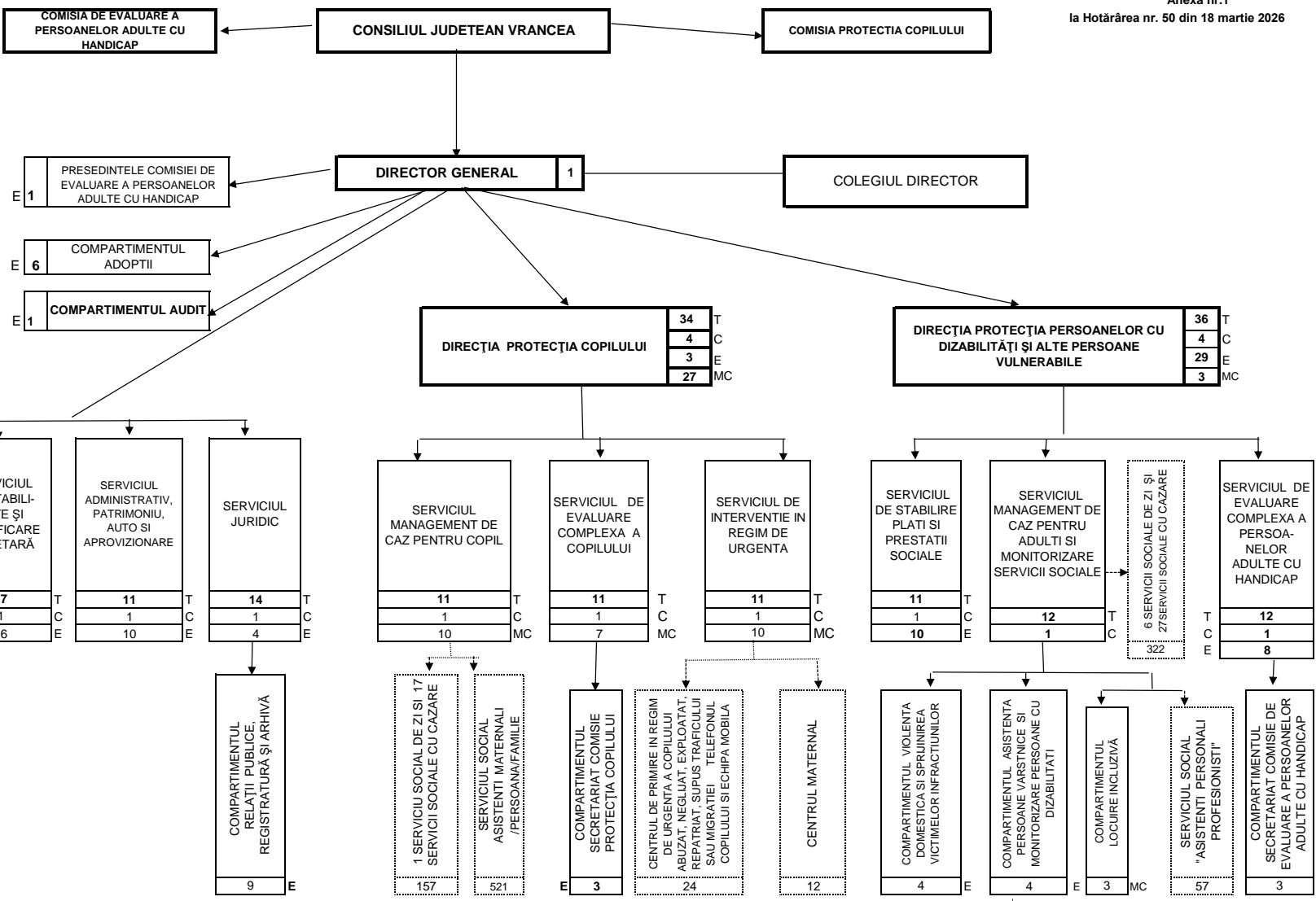


| | |
|------------------------------|--------------|
| Aparat propriu | 118 |
| Functii de conducere | 14 : |
| Director general | 1 |
| Director general adjunct | 2 |
| Şef serviciu | 11 |
| Functii de executie : | 104 |
| la care se adauga | |
| MANAGERI DE CAZ -30 | |
| din care : | |
| copil | 27 |
| adult | 3 |
| Total | - 148 |



T- TOTAL PERSONAL CONTRACTUAL
C- PERSONAL CONDUCERE
E- PERSONAL EXECUTIE
MC- MANAGER DE CAZ

Președintele
Consiliului Județean Vrancea,
Nicușor HALICI

Contrasemnează,
Secretarul general al județului
Raluca Dan